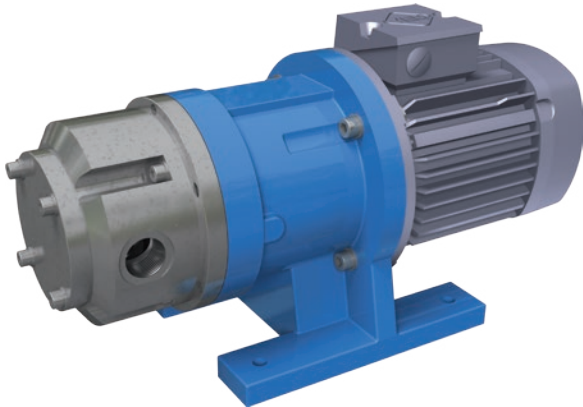


# MAGNETICALLY COUPLED ROTARY SLIDING VANE PUMP

## Series VANE-MAG MPA

MPA 1014 - 1514 - 2014 - 2414 (MPA III°R)



### PERFORMANCE DATA

Nominal speed:	1450 1/min / 1750 1/min
Nominal frequency:	50 Hz / 60 Hz
Nominal flow rate:	
MPA 1014:	950 l/h / 1150 l/h (304 US gph)
MPA 1514:	1150 l/h / 1850 l/h (489 US gph)
MPA 2014:	1950 l/h / 2350 l/h (621 US gph)
MPA 2414:	2400 l/h / 2800 l/h (740 US gph)
Discharge pressure, max:	13 bar (188,55 psi)
Design pressure:	PN 16 bar (232,06 psi)
	Optional PN40, PN63, PN100
Temperature, max.:	120°C (248°F)
	>120°C on request
Viscosity, max.:	5000 mPa s
Density, max.:	1,9 kg/dm <sup>3</sup>

### APPLICATIONS

The VANE-MAG® sliding vane pumps have proven their performance in every application that requires lower flow rates at high discharge pressure, when corrosive liquids must be metered.

#### Typical Applications:

- Ammonia metering in Flue-Gas Denitrification Plants (SNCR)
- Pentane metering in Polyurethane Insulation Production Plants
- Metering pump for Sodium Methylate in Biodiesel production
- Pump for cooling agents in refrigeration technology
- Dosing / metering applications
- Plant Engineering
- Equipment Engineering
- Pharmaceutical-, Medical-, Bio- Engineering

### MATERIALS

Housing:	Stainless steel AISI316Ti
O-Rings:	EPDM, Viton, Kalrez, FEP
Rotor:	Stainless steel AISI316Ti
Stator, Vanes::	Carbon-Graphite SiC coated
Bearings:	SiC

### CONNECTIONS

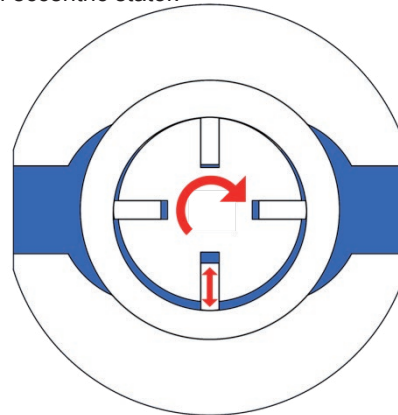
Threads:	G1" female, 1" NPT
Lap Joint Flanges:	DN25 PN16, 1" ANSI

### DESIGN FEATURES

- Rotating positive displacement pump
- Sliding Vane Pump
- Metallic housing materials
- Magnetically coupled
- Leak-Free
- Rugged
- Wet self-priming
- Dry running capable
- For pure liquids w/o abrasive solids
- Compact block design
- Approximately no pulsation
- Middle to high discharge pressure
- Low capacity flow rates
- Metering capable

### PRODUCT DESCRIPTION

MARCH Series: VANE-MAG® MPA pumps are rotary positive displacement pumps, magnetically coupled and made of stainless steel AISI316Ti. Characteristic wise, rotary sliding vane pumps generate low volumetric flows with middle to high discharge pressures and approximately no pulsation. The operating principle is based on radial sliding vanes, which are rotating in an eccentric stator.



The pump housings are machined of solid block materials.

The motor power is transmitted by a frictional connection to the hydraulic part of the pumps by strong Neodymium-Permanent-Magnets. The pump is able to work without any shaft seals, which guarantees a save and maintenance-free transfer of the liquid without any leakage of corrosive, toxic and explosive fluids. Pumps for hazardous explosive areas, zone 1 or 2, are available upon request.

### MOTOR ADAPTION

EU Version:	IEC Size 90 B5, 1,5kW
	1500 1/min
US Version:	NEMA143/145TC, 2.0 HP
	1750 1/min



VANE-MAG Canada

Vissers Sales Corp. : sales@vissers.on.ca : 800-367-4180

