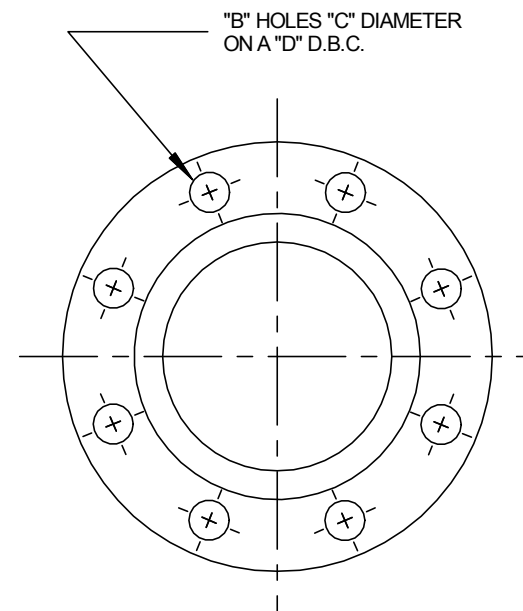


KOFLO STATIC MIXER CONSTRUCTED OF
SCHEDULE 40 OR 10 PIPE WITH * FIXED
LOW PRESSURE LOSS DESIGN MIXING ELEMENTS



150 LB. RAISED FACE FLANGED ENDS

NOTE: SCH 40 IS USED FOR CARBON STEEL MIXERS
SCH 10 IS USED FOR SS/ALLOY MIXERS 3" AND LARGER

SIZE	"A"					"B"	"C"	"D"
	*NUMBER OF ELEMENTS							
	2	3	4	5	6			
1/2"	5	5	5	6.5	8	4	5/8"	2-3/8"
3/4"	5	6	7	9	11	4	5/8"	2-3/4"
1"	5	7	9	11	13	4	5/8"	3-1/8"
1-1/2"	8	12	15	18	21	4	5/8"	3-7/8"
2"	10	14	18	23	27	4	3/4"	4-3/4"
2-1/2"	12	17	23	28	34	4	3/4"	5-1/2"
3"	15	22	29	36	43	4	3/4"	6"
4"	19	29	38	48	57	8	3/4"	7-1/2"
6"	29	43	57	70	84	8	7/8"	9-1/2"
8"	38	56	74	~~	~~	8	7/8"	11-3/4"
10"	46	69	92	~~	~~	12	1"	14-1/4"
12"	55	82	~~	~~	~~	12	1"	17"

		Koflo Corporation 309 CARY POINT DR. CARY, IL 60013	
		SCALE: NONE	APPROVED BY: <i>JLF</i>
DATE: 7/10/07		REVISED: 5/30/08	
CUSTOMER:		REVISED: 8/7/09	
MODEL NO: TYPICAL LOW PRESSURE LOSS DESIGN FLANGE MOUNTED MIXER		DRAWING NUMBER: KD-986	