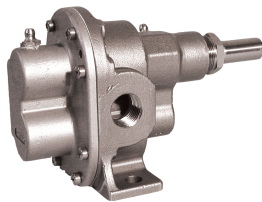


BRONZE PEDESTAL ROTARY GEAR PUMPS

GEAR PUMPS SERIES S4000L

PERFORMANCE



FEATURES

- Rugged Investment Cast Stainless Steel Housing
- Drop-in replacement for N4000L
- Fully "Bio-food" grade
- Tailored to serve Maple Syrup Filter Press applications.
- Graphitized Silicon Carbide Sleeve Bearings
- Hardened Stainless Steel Shafts
- Stainless Steel Gears
- Fluoroelastomer Cover O-ring
- Lubrication Fittings
- Synthetic braided compression packing with Polytetrafluoroethylene (PTFE) dispersion

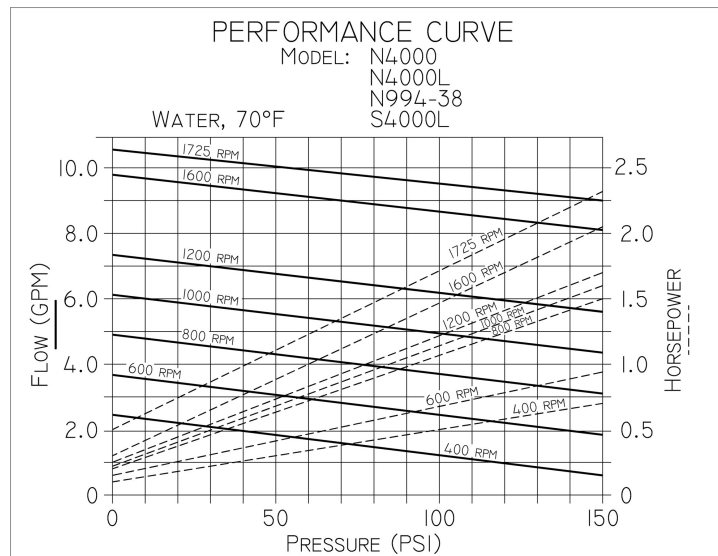
DRIVE

These pumps are positive displacement devices capable of generating high line pressure. Discharge lines should be fitted with properly sized line pressure relief valves to protect both the pump and the system. The relief outlet should be piped back to the suction vessel.

LIQUIDS AND TEMPERATURE

Tailored to handle typical processing conditions including raw sap to 220F up to 80 psi as well as 140F hot water flushing. Regreasing is recommended to prevent sap build-up between shaft and bearing surfaces.

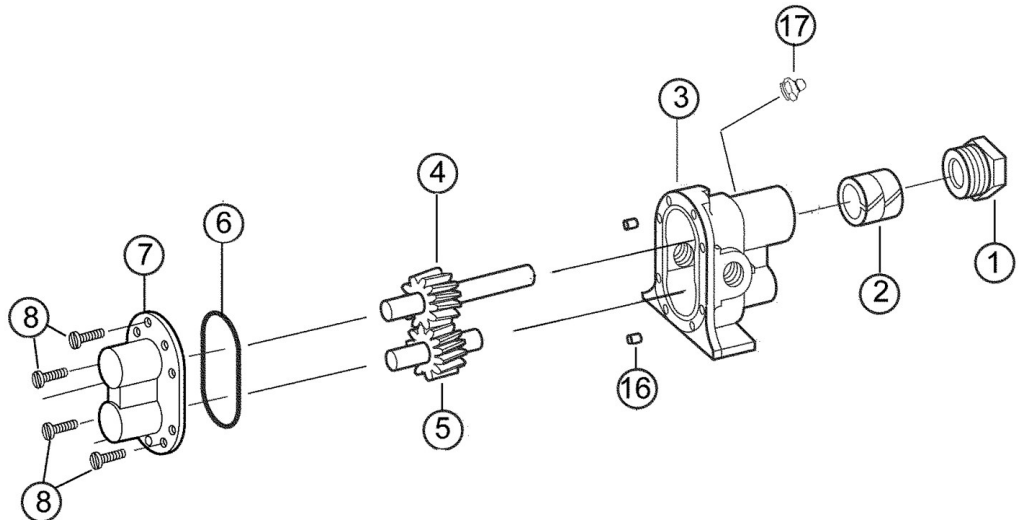
*For pressures over 100 psi, the above selections are suitable for pumping fluids with lubricity (e.q. oils, polymers). Service life will decrease for fluids without lubricity (e.q. water, solvents).



SUCTION LIFT

Close tolerances and positive displacement action make the rotary gear pump capable of lifting fluid on the suction side as high as 20 feet. Though gears pumps are self priming, a foot valve is recommended. If possible, wet the gears with liquid to be pumped for the first dry start. Liquid retained in the system and gear chambers serves to "wet" the pump on subsequent starts.

EXPLODED VIEW AND PARTS LIST



	1	2*	3	4*	5 *	6*	7	8	16	17	Repair Kit *
	Packnut	Packing	Body Assy	Drive Gear Assy	Idle Gear Assy	O-ring	Cover Assy	Screw	Dowel Pin	Grease Fitting	
	1 Req'd	2 Req'd	2 Req'd	1 Req'd	1 Req'd	1 Req'd	1 Req'd	8 Req'd	2 Req'd	2 Req'd	
S4000L	1762-01	5479	9319SD1N-1-S	33199-1	33198-1	9797-041	9322SN5N-1-S	5385	8885	5390-01	12317

* Repair kit includes these items

DIMENSIONS

