

Texel® MTA Series

Texel MTA Series Pumps

Today's industrial processes demand pump reliability and efficiency, especially when faced with the issues associated with handling extremely corrosive organic acids, bases, alcohols, hydrocarbons and halogens. That's why Magnatex offers Texel MTA Series Pumps for the most severe services. The MTA series pumps ensure maximum safety, efficiency and performance when transferring toxic, corrosive or expensive fluids due to a sealless, magnetic drive design featuring a PFA fluoropolymer lining and ANSI compatibility.

The Texel MTA Series Pumps are designed with process industry requirements in mind. The heavy-duty materials of construction and proven design make it suitable for use in operations where leakage is not an option.

The MTA series pumps are available in fifteen close-coupled models. Benefits include:

- Conforms to ANSI B73.3 standards
- Durable PFA lining provides superior chemical resistance
- Inner magnet assembly is totally encapsulated in PFA, with no seams or welds
- Unique dovetail design ensures stability of the liner during pressure/temperature fluctuations

MTA Series Specifications

Maximum Flow	320 GPM
Maximum Head	285 FT
Temperature	32° to 250° F
Maximum Power.....	25 HP
Working Pressure	150 PSIG
Materials	PFA Lining
Connections	150 LB RF
Bearings	C-PTFE, G-PTFE, SiC and Carbon
Impeller.....	Closed
Speeds	1800/3600 RPM
Magnets.....	Neodymium
Motor	"C" Face

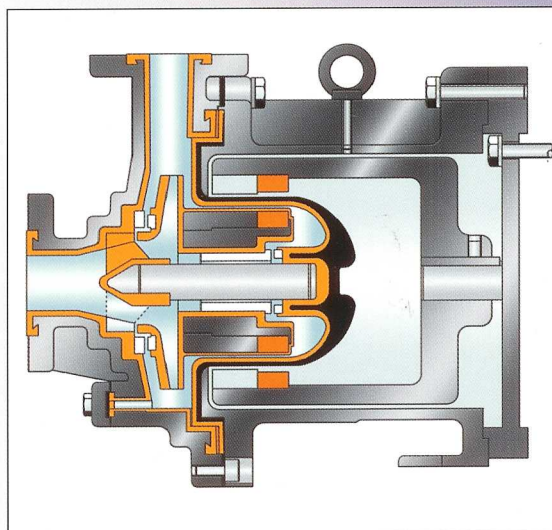


- Transfer compression molding ensures uniform thickness and maximum resistance to permeability
- Sealless magnetic drive provides leak-free performance
- Wet ends are PFA-lined ductile iron

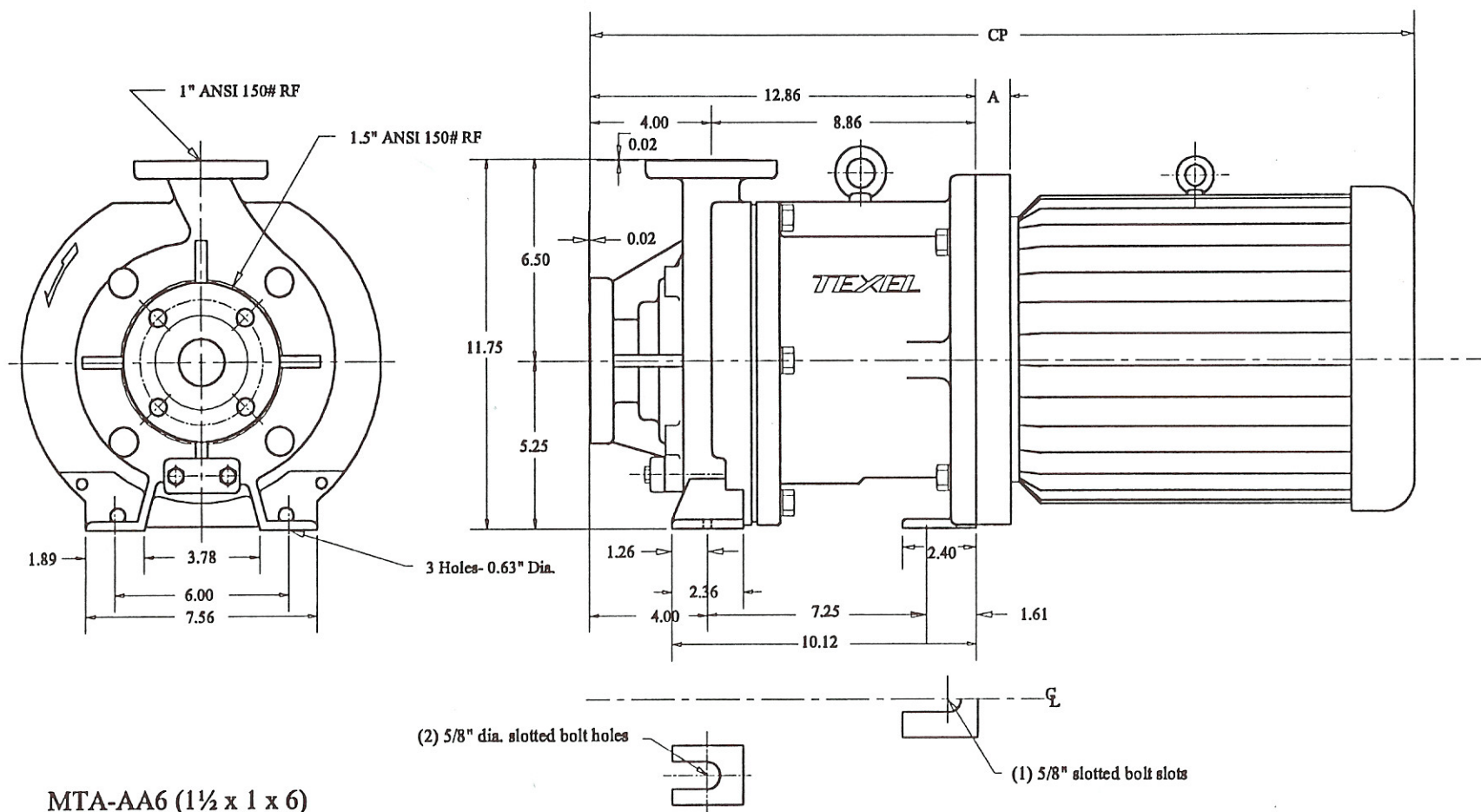
PFA Lining

The superior performance of the MTA Series is due to the PFA fluoropolymer lining, the lining design and the molding process. PFA is a fluorinated thermoplastic known for its exceptional resistance to virtually all corrosive chemicals.

The MTA Series design incorporates a dovetail construction to lock the lining in the casing to ensure lining stability even in extreme pressure/temperature fluctuations. Additionally, the state-of-the-art transfer compression molding process ensures a thick, uniform lining with a smooth surface to maximize chemical and abrasion resistance.



"A large southeastern engineering firm wanted a high performance, cost-effective sealless pump for difficult service in a major wastewater treatment facility. The firm could not compromise quality at the possible expense of losing the client. They specified Magnatex Texel MTA pumps because of their PFA lining, dovetail lining design and overall rugged construction. The client continues to be extremely satisfied with all of the pumps' performance and maintenance-free operation."



MOTOR FRAME	A	CP	PUMP / MOTOR WEIGHT
143TC	0.3	23.7	240 #
145TC	0.3	24.8	240 #
182TC	1.1	25.5	260 #
184TC	1.1	26.5	260 #
213TC	1.6	28.8	320 #
215TC	1.6	30.3	335 #
254TC	2.2	33.6	430 #
256TC	2.2	35.3	470 #
284TSC	1.4	37.3	530 #

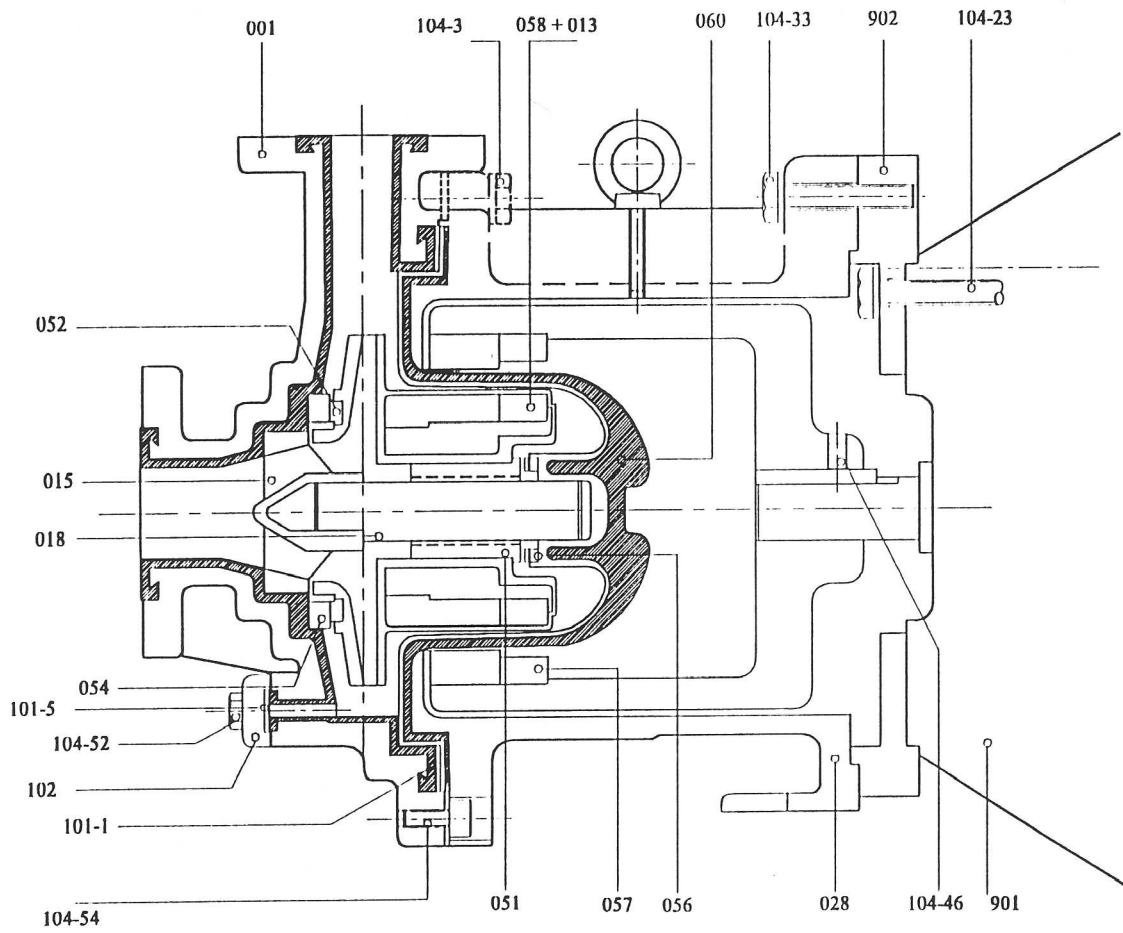
ALL DIMENSIONS IN INCHES. NOT FOR CONSTRUCTION PURPOSES UNLESS APPROVED.

REVISIONS		MAGNATEX® Pumps Inc. OUTLINE DIMENSIONS TEXEL MTA SERIES CLOSE-COUPLED PUMPS		
NO.	DATE			
1		MTA-AA6 DD-5160		
2				
3				
4				
5				

DRAWN BY:
R. TAMBOONGDATE:
2-28-2000

REV.:

COPYRIGHT 1998 MAGNATEX PUMPS INC.



No.	Part Name	Material	Qty.
902	Motor Adapter	Steel	1
901	Motor		1
104-54	Rear Casing Bolt	304 SS	4
104-52	Drain Bolt	304 SS	2
104-46	Outer Magnet Set Screw	304 SS	2
104-33	Motor Adapter Bolt	304 SS	2
104-23	Motor Bolt	304 SS	4
104-3	Casing Bolt	304 SS	6
102	Drain Flange	Cast Iron	1
101-5	Drain Gasket	PTFE	1
101-1	Casing Gasket	PTFE	1
060	Rear Casing	PFA + Eng. Plastic	1
058+013	Inner Magnet/ Impeller	Rare Earth/ PFA	1
057	Outer Magnet	Rare Earth	1
056	Rear Thrust Ring	SiC	1
054	Front Thrust Ring	SiC	1
052	Mouth Ring	C-PTFE/ SiC	1
051	Bushing	C-PTFE/ SiC	1
028	Bracket	Cast Iron	1
018	Shaft	SiC	1
015	Shaft Support	PFA	1
001	Casing	PFA+Duct. Iron	1

MTA-AA6 (1½ x 1 x 6)
MTA-AA8 (1½ x 1 x 8)

REVISIONS		MAGNATEX[®] Pumps Inc. SECTIONAL DRAWING TEXEL MTA SERIES CLOSE-COUPLED PUMPS		
NO.	DATE			
1		<div> <div>DRAWN BY: R. TAMBOONG</div> <div>DATE: 2-01-2000</div> <div>REV.: 0</div> </div>		
2				
3				
4				
5				
		MTA-AA6/AA8 SD-5270		