

MAGNATEX® MMP Series



The MMP Series magnetically driven, sealless, centrifugal pumps are heavy-duty mag-drive pumps with superior SiC-X bearing materials for low flow applications. These close-coupled pumps are similar in construction to the MPL/MP Series, except the shaft is stationary and the suction/discharge ports are male NPT with optional flanges available.

The MMP Series pumps are high-quality, dependable, long-lasting, pumps utilizing our exclusive straddle bearing design and furnished with the shaft, thrust ring and bushing made of beta sintered silicon carbide material. Sealless pumps help eliminate "Reportable Release" issues.

All Magnatex® pumps and spare parts come with a 1-year unconditional warranty on materials and workmanship.

MAGNATEX® MMP Series Specifications

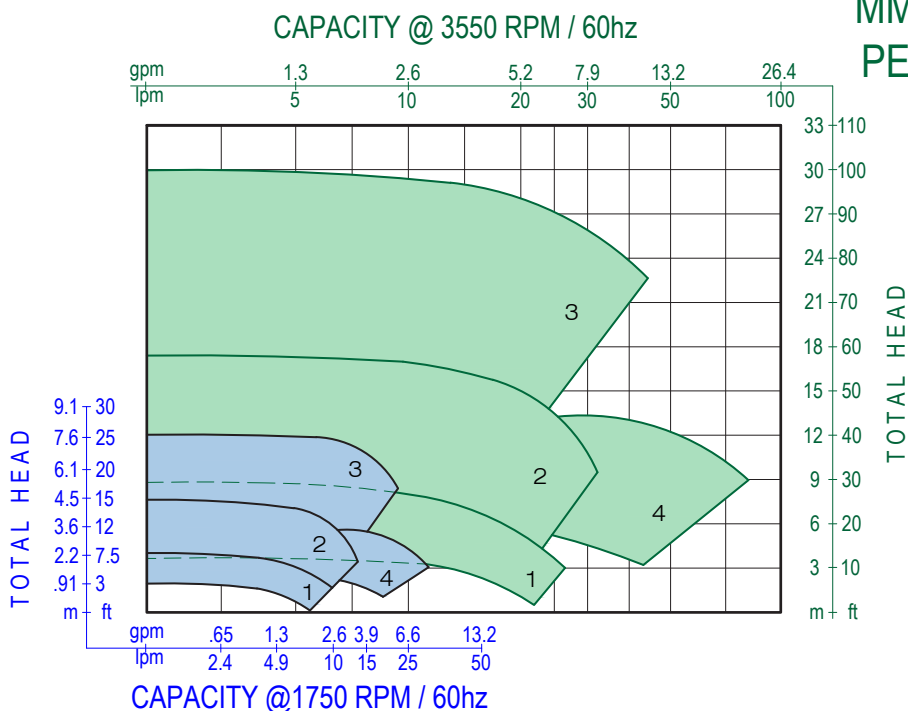
Maximum Flow	20 GPM
Maximum Head	95 FT
Liquid Temperature	-100° F to 536° F
Maximum Power	¾ HP
Connections	NPT or Optional Flanges
Bearings	SiC/SiC-X Standard
Working Pressure	85 psig
Impeller	Enclosed
Speeds	Up to 3550 rpm
Magnets	Neodymium
Motor	NEMA or IEC Frame Mounted

Materials of Construction:

- 316SS
- Ceramic or Stainless Steel Shaft Option



Optional high-pressure models for suction conditions to 5,000 psi and more.



MMP SERIES COMPOSITE PERFORMANCE CURVES

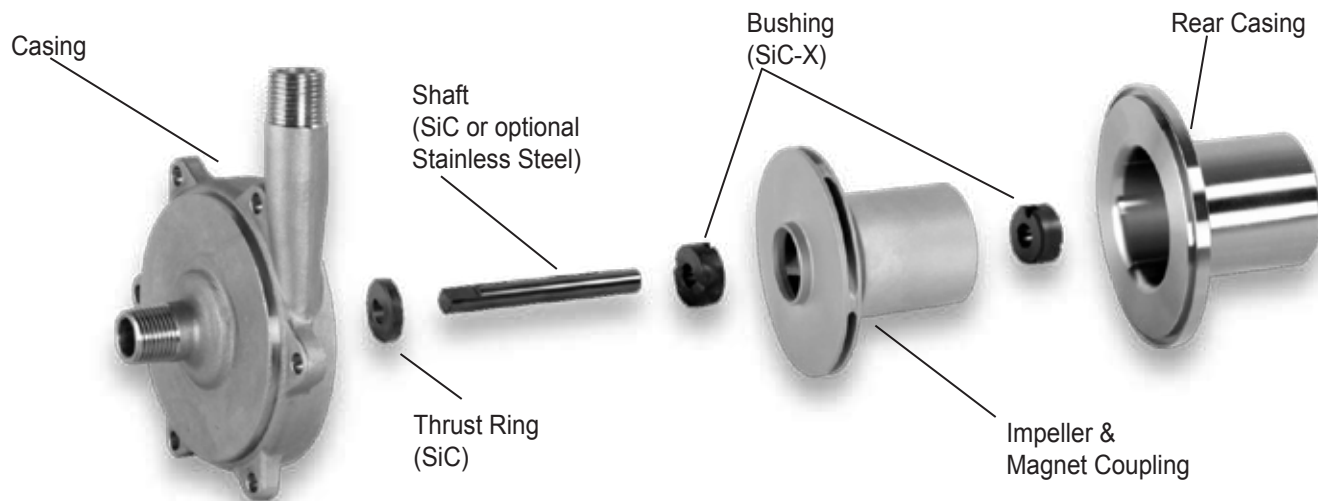
@ 3550 RPM 60hz

- 1 MMP10 .5 X .5 - 4
- 2 MMP11 .5 X .75 - 4
- 3 MMP21 .75 X .75 - 4
- 4 MMP22 1 X .75 - 4

@ 1750 RPM 60hz

- 1 MMP10 .5 x .5 - 4
- 2 MMP11 .5 x .75 - 4
- 3 MMP21 .75 x .75 - 4
- 4 MMP22 1 x .75 - 4

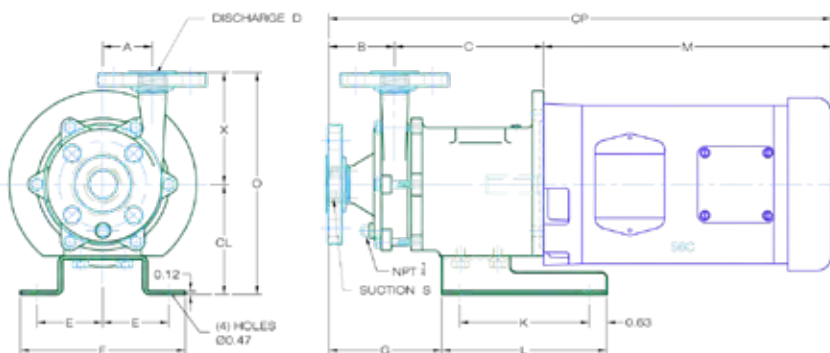
MAGNATEX® MMP Series Component View



(Magnetex standard model shown)

Optional high-pressure models for suction conditions to 5,000 psi and more

SHOWN WITH OPTIONAL FLANGES



CONDUIT BOX SHOWN FOR ILLUSTRATION ONLY
REQUIRED LOCATION MUST BE SPECIFIED

MAGNATEX®
Pumps, Inc.

DIMENSIONAL DRAWING
MMP SERIES CLOSE-COUPLED PUMP

DRAWN BY: B VALENTIN DATE: 08/13/09 SCALE: NTS PAGE: 1 OF 1

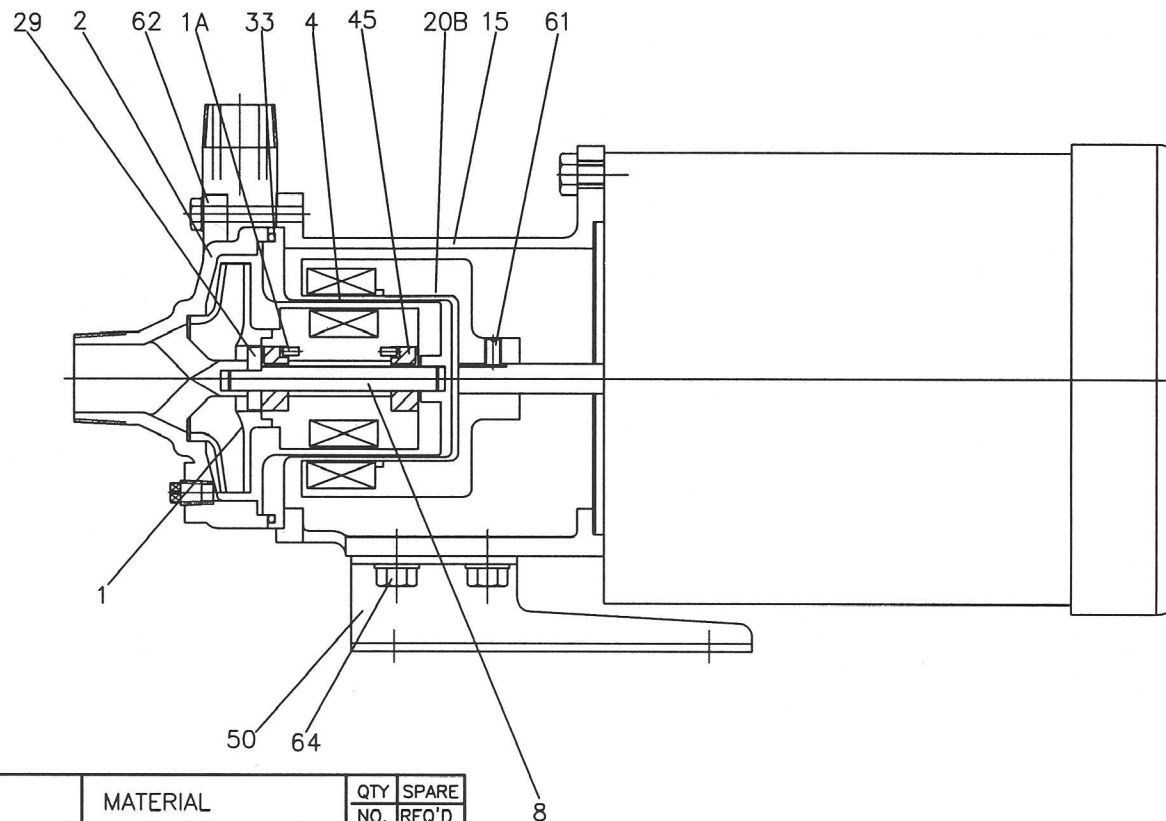
DD-MMP SERIES

ALL DIMENSIONS IN INCHES ± 0.12"


NOT FOR CONSTRUCTION

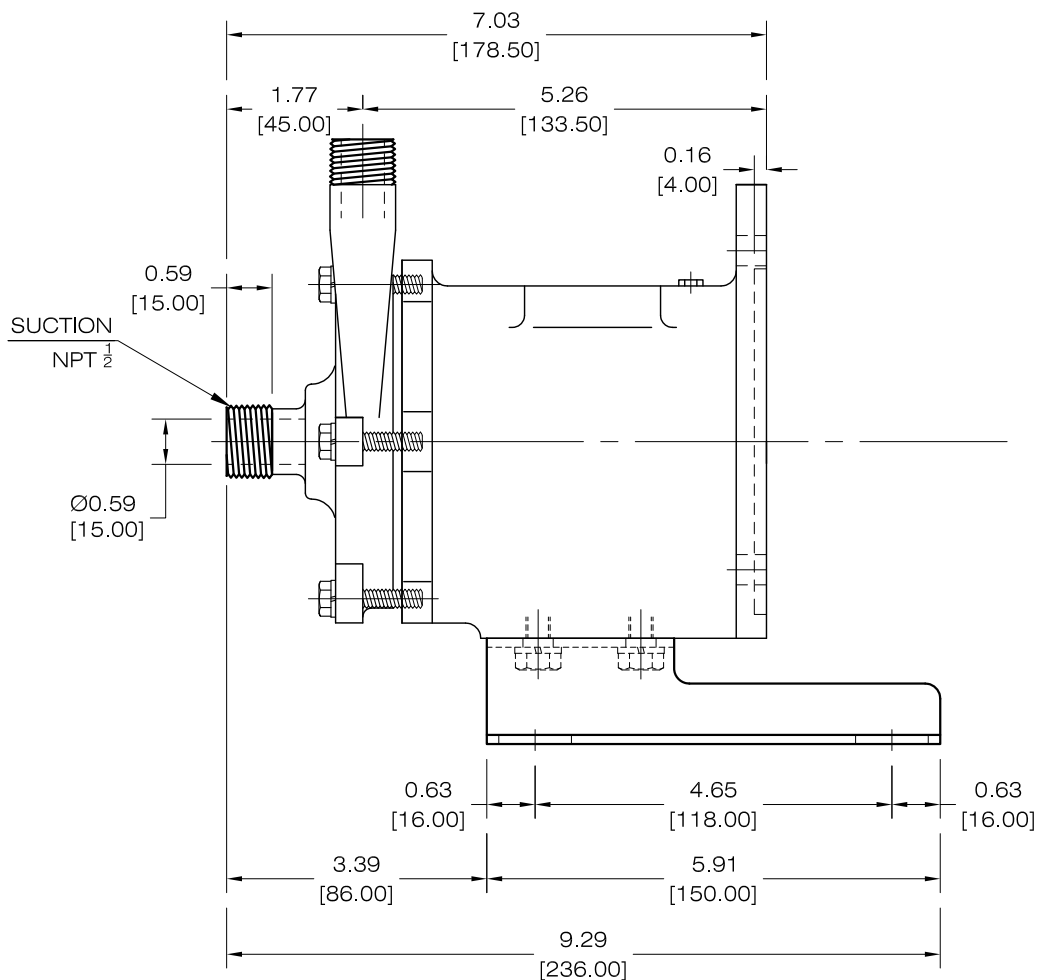
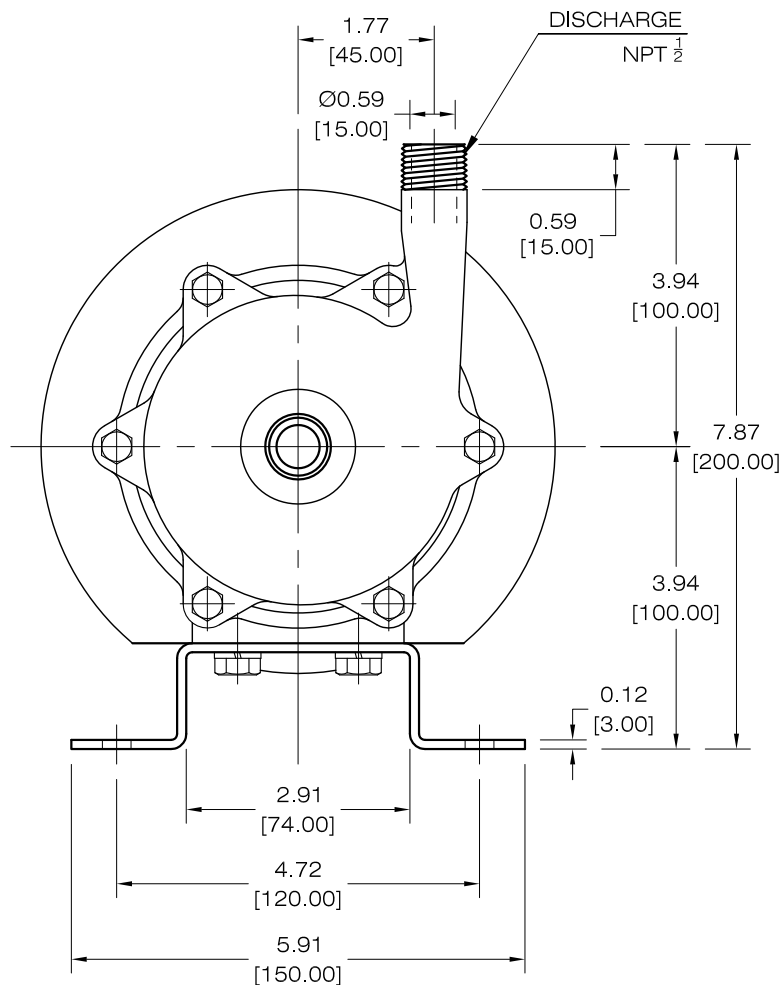
MODEL	MOTOR FRAME	DIMENSIONS										STANDARD NPT					* OPTIONAL 150# ANSI RF					APROX. WEIGHT lbs.	
		M	CP	B	C	E	F	G	K	L	CL	S	D	A	X	O	S	D	A	X'	O'	PUMP	MOTOR
MMP11	56 C	13.85 MAX	20.95	1.80	5.30			3.40				1/2	1.80	4.00	8.00	1/2	1.80	4.06	8.06			40	40
MMP21			21.15	2.00	5.30	2.35	5.90	3.00	4.60	5.90	4.00	3/4	2.00	4.70	8.70	3/4	2.00	4.76	8.76			44	46
MMP22			21.65	2.40	5.40			4.10				1/2 3/4	1.80	4.00	8.00	1/2 3/4	1.80	4.06	8.06			44	40

*DOES NOT CHANGE THE PRESSURE RATING OF THE PUMP



ITEM	DESCRIPTION	MATERIAL	QTY NO.	SPARE REQ'D
1	IMPELLER + INNER MAGNET	316SS	1	
1A	PIN	316SS	2	
2	CASING	316SS	1	
4	REAR CASING	316SS	1	
8	SHAFT	SiC	1	
15	FRAME ADAPTOR	CAST IRON	1	
20B	OUTER MAGNET	DUCTILE IRON/Nd	1	
29	THRUST RING	SiC	1	1
33	O-RING/GASKET	PTFE	1	1
45	BUSHING	SiC	2	2
50	BASE	304SS	1	
61	SET SCREW	STEEL	1	
62	BOLT WITH WASHER	304SS	6	
64	BOLT WITH WASHER	STEEL	4	

REVISIONS				
NO.	DATE			
1		MMP SERIES CLOSE-COUPLED PUMPS SECTIONAL DRAWING		
2				
3		DRAWN BY: J. W. CARTER	DATE: 04-16-02	REV.:
4		MMP SERIES SD-5100		
5				



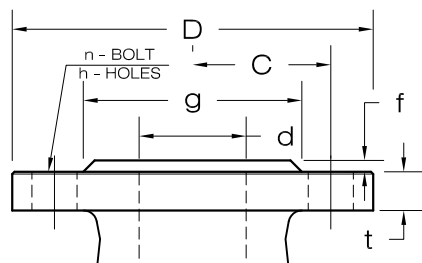
ALL DIMENSIONS $\pm 0.12"$ [3mm]

DISCHARGE -dd
SUCTION -ds

ANSI 150# FLANGE

	d	D	t	f	g	C	n	h
dd-	.59	-	-	-	-	-	-	-
ds-	.59	-	-	-	-	-	-	-

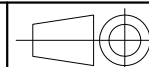
UNIT=INCHES



CONFIDENTIAL

This drawing is the property of Magnatex Pumps Inc. and is confidential. Not for use for any manufacturing purpose without documented authorization of Magnatex Pumps Inc.

REVISIONS Δ



NO.	DATE	COMMENT	INT
1	10.13.10	Metric Dims	bvc
2			
3			
4			
5			

MAGNATEX
Pumps, Inc.

PUMP DIMENSIONAL DRAWING
MMP SERIES CLOSE-COUPLED PUMP

DRAWN BY: B VALENTIN DATE: 08/13/09 SCALE: NTS PAGE: 1 OF 1

PD-MMP11-56