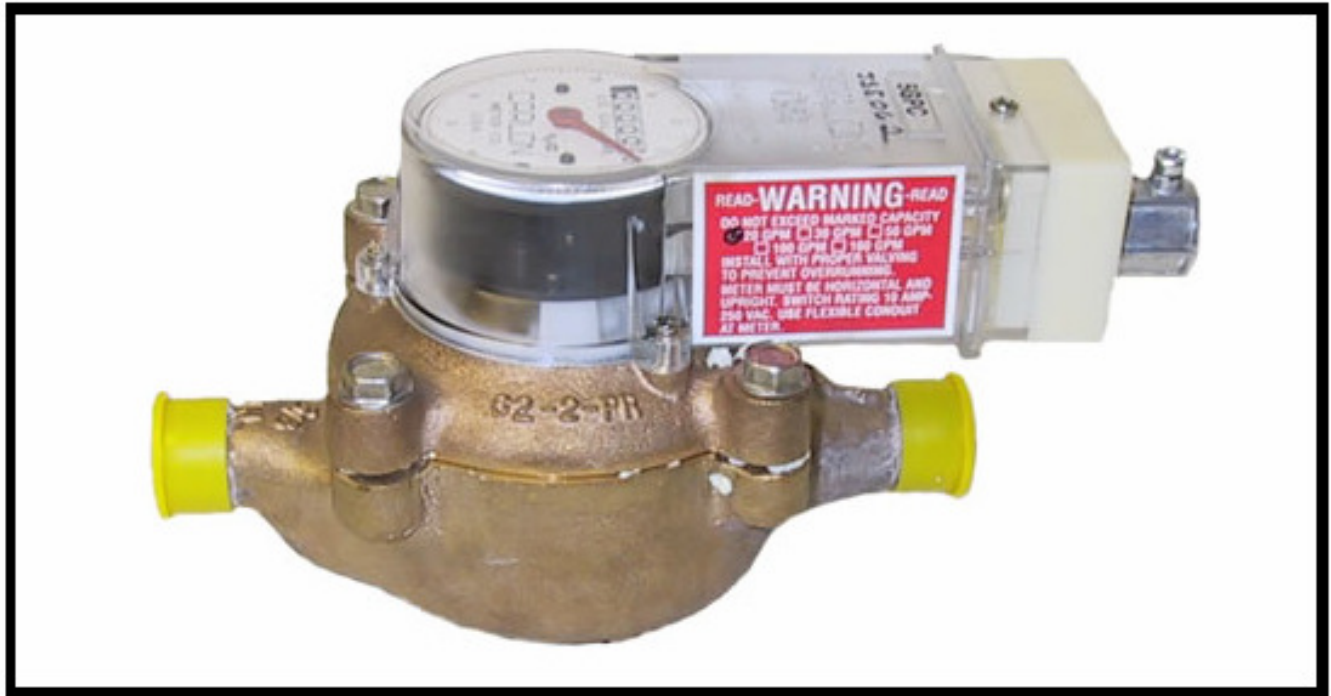


JSJ® METERS



Carlson JSJ electric contacting positive displacement meters have long been recognized as the industry leader for those who require a meter that combines incredible reliability, durability and accuracy. The electric contact voltage and amperage rating is one of the industries highest. Our magnetic drive, oscillating piston, dry contact design sets Carlson JSJ meters apart from the competition. Used in conjunction with Carlson timers and controls, our JSJ bronze meters allow you to customize a system allowing strict control over your critical cooling tower, boiler, water softener regeneration, or any chemical treatment application you require. Carlson JSJ meters are available in sizes from 1/2" to 2" and are accurate to +/- 1.5% at flows from 1/4 GPM up to 160 GPM and 150 psi.



1710 EATON DRIVE • GRAND HAVEN, MICHIGAN 49417

PHONE (616) 842-0420 FAX (616) 842-1265

E-MAIL CARLON@CARLONMETER.COM • WWW.CARLONMETER.COM

METER SELECTION CHART

METER/PIPE SIZE	MODEL	*CONTINUOUS FLOW	FLOW RANGE	WEIGHT	LENGTH	HEIGHT	WIDTH	CONNECTION LENGTH [X2]	
5/8 X 1/2	JSJ062	10 GPM	1/4 - 20 GPM	7.2 lbs.	7 1/2	5 1/8	4	3/8	2 3/8
5/8 X 3/4	JSJ0621	10 GPM	1/4 - 20 GPM	7.5 lbs.	7 1/2	5 1/8	4	3/8	2 1/2
3/4 X 3/4	JSJ075	15 GPM	1/2 - 30 GPM	9.3 lbs.	9	5 5/8	4	1/2	2 1/2
3/4 X 1	JSJ0751	15 GPM	1/2 - 30 GPM	9.6 lbs.	9	5 5/8	4	1/2	2 5/8
1	JSJ100	25 GPM	3/4 - 50 GPM	17.8 lbs.	10 3/4	6 7/16	6	5/16	2 5/8
1 X 1 1/4	JSJ1001	25 GPM	3/4 - 50 GPM	18.0 lbs.	10 3/4	6 7/16	6	5/16	2 7/32
1 1/2	JSJ150	50 GPM	2 - 100 GPM	25.0 lbs.	12 5/8	7 3/8	7	9/16	2 27/32
2	JSJ200	80 GPM	2 - 160 GPM	38.0 lbs.	15 1/4	8	8	3/4	3 1/32

***Continuous Flow:** The size of meter selected should be based upon continuous flow, GPM, as opposed to pipe size. For example, if it is determined that continuous flow is 25 GPM, a 1" meter should be selected rather than a 3/4" meter.

ORDERING INFORMATION: Specify model number shown followed by choice of contact setting desired.

Example: 3/4" meter, 1" pipe size, 10 gallons per contact = JSJ0751-10 GPC.

X = AVAILABLE CONTACT SETTINGS

All contact settings are pre-set at the factory to your specification – call for available metric contact settings.

METER SIZE	.5 CFPC	1 GPC	1 OR 2 CFPC	2.5 GPC/CFPC	5 GPC	5 CFPC	10 GPC	10 CFPC	20 GPC	20 CFPC	25 GPC	25 CFPC	50 GPC/CFPC	100 GPC/CFPC	200 GPC	250 GPC	500 GPC	1000 GPC
5/8 X 1/2	X	RS	X	RS	X	X	X	X	X	X	X	X	X	X	X	X	X	X
5/8 X 3/4	X	RS	X	RS	X	X	X	X	X	X	X	X	X	X	X	X	X	X
3/4 X 3/4	X	RS	X	RS	X	X	X	X	X	X	X	X	X	X	X	X	X	X
3/4 X 1	X	RS	X	RS	X	X	X	X	X	X	X	X	X	X	X	X	X	X
1"	X	RS	X	RS	X	X	X	X	X	X	X	X	X	X	X	X	X	X
1 X 1 1/4"	X	RS	X	RS	X	X	X	X	X	X	X	X	X	X	X	X	X	X
1 1/2	N/A	RS	N/A	RS	RS	X	RS	X	N/A	X	RS	X	X	X	X	X	X	X
2"	N/A	RS	N/A	RS	RS	X	RS	X	N/A	X	RS	X	X	X	X	X	X	X

RS – JSJ meter with this GPC setting furnished with dry contact reed switch. 48V, .20 amp, 3 watt maximum rating.
GPC = Gallons Per Contact **CFPC** = Cubic Feet Per Contact

SPECIFICATIONS

Meter Connection: Carlon supplies necessary connections with all JSJ meter orders.

Pressure rating: 30-150 psi.

PH Level Range: 6.5 – 8.0

Temperature Range: 35-105 degrees F. Protect the meter from freezing.

Accuracy: +/- 1.5% of maximum flow when operating between minimum and maximum flow range.

Register Options: U.S. Gallons, Cubic feet, Metric.

Installation Instructions:

1. Flush the line thoroughly after all plumbing changes to prevent contaminants from entering the meter.
2. Install horizontally with the register facing up and inlet port facing the water supply line.
3. The switch is a normally open type micro-switch and is rated for a maximum of 10 amps at 250 V AC.
4. For outdoor installation, protect meter from direct exposure to the elements.
5. Protect meter from backflow of water opposite of indicated flow direction.

Warranty: Carlon warrants its products to be free of defect in material or workmanship for a period of twelve months from the date of purchase. Contact us to obtain a copy of our complete statement of warranty.

Helpful Hints:

1. Install a Carlon slow-closing valve downstream of your water meter.
This will eliminate possible meter damage from water hammer in your system.
2. Install a Carlon strainer upstream of your water meter to protect the meter and any other in-line process equipment from becoming jammed by particulate matter in your system.

Additional Information: If you require additional information, visit us online at www.carlonmeter.com