

Features

- Works with all fluids—clean water, waste water, non-aqueous, debris-filled
- Unrivaled simplicity, ruggedness and price using pressure
- $\pm 0.25\%$ accuracy
- Direct 4-20 mA output
- Pre-calibrated level ranges
- Available with and without intrinsic safety barrier
- Custom cable lengths up to 999 feet.
- Optional lightning/surge protection
- Two-year warranty

Description

The AM-HLT level transducers are simple, rugged and inexpensive level sensors with built-in 4-20 mA transmitters. The user simply places the sensor at the bottom of the water (or fluid). The sensor converts the difference between the hydrostatic pressure and atmospheric pressure to the water depth.

With an IP68 rating they are right at home in everything from potable water to activated sludge and any Class 1, Div 2 environment. Wetted materials are 316 SS (titanium is optional) teflon coated diaphragm. The vent tube is kept dry with a patented vent filter. Every sensor is customized by the customer (at not additional cost) to provide a 4-20 mA output tailored to the maximum depth required.

The HLT transducers come in three form factors: The AM-HLT-1 is the most economical choice for measuring level in clean liquid applications. It's 1" recessed membrane protects it from sharp For wastewater and liquids containing debris the HLT-5 features a non-fouling flush membrane and HLT-50 offers a wide 2.75" diameter diaphragm that is protected by an aluminum plate.

Every sensor includes a vent filter to prevent moisture from entering the vent tube. An optional aneroid bellows permanently seals the vent tube. Optional anti-surge circuitry offers lifetime-guaranteed protection from lightning strikes and power surges.

Applications

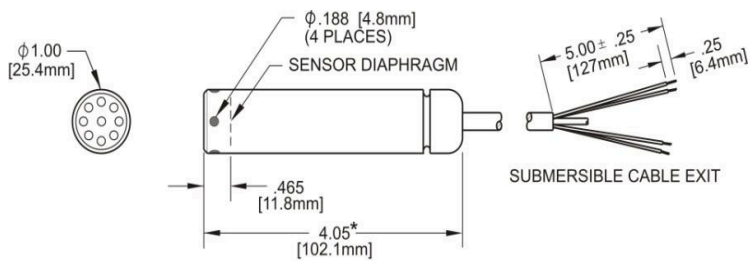
- Level control
- Well monitoring
- Lift stations
- Pump control
- Slurry

Model AM-HLT Level Transducers

Specifications

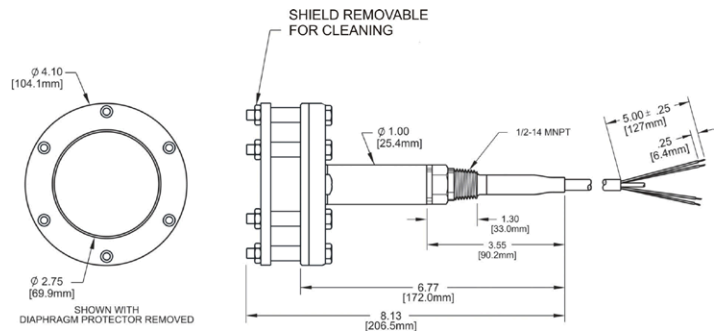
	AM-HLT-0	AM-HLT-5	AM-HLT-50
Membrane	Recessed 1" Teflon coated	1" Flush Teflon coated	2.75" Diam. w Al plate
Full Scale Range	2/3 to 700 ft (0.7 to 210 m)	6 - 115 ft (2 - 35 m)	10 - 115 ft (2 - 35 m)
Proof Pressure	1.5 x full scale		
Burst Pressure	2.0 x full scale		
Accuracy (static)	0.25% (1% optional for AM-HLT-0)		
Electrical			
Driving Voltage	9-30 VDC		
Input Current	20 mA max for mA output, 3.5 mA max for VDC output		
Output	4-20 mA (0-5 VDC optional)		
Zero Offset	±0.20 mA		
Output Impedance	$(V_{PS} - 9 V) / 20 \text{ mA}$ (V_{PS} = power supply voltage)		
Circuit Protection	Polarity, surge-shorted output		
Peak Clamping Voltage	36 VDC		
Physical			
Wetted materials	316 SS or Titanium, polyurethane, Viton		
Compensated Temp. Range	0 to 50 °C		
Thermal Error	±0.05 °C		
Operating Temperature Range	-20 to 60 °C		
Protection Range	IP68, NEMA 6P		

Dimensions

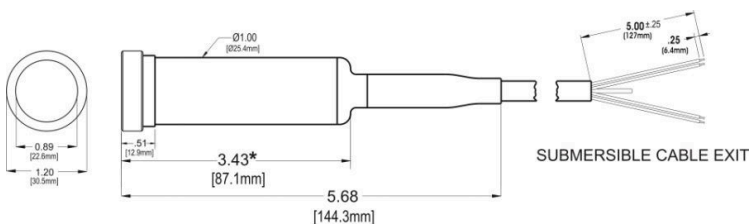


*ADD 1.95" FOR LIGHTNING PROTECTION OPTION

AM-HLT-0



AM-HLT-50



*ADD 1.95" FOR LIGHTNING PROTECTION OPTION

AM-HLT-5

Order Information

Models

AM-HLT-0	Recessed membrane
AM-HLT-5	Flush anti-fouling membrane
AM-HLT-50	Wide membrane with protective plate

Options

AM-HLT-SP	Lifetime Lightning/surge protector
-----------	------------------------------------

Accessories

AM-HLT-VT	Replacement Vent Filter
AM-HLT-AB	Aneroid Bellows
AM-HLT-CH	Cable Hanger
AM-HLT-DM	Display Meter